

# RIVIERE

465-52-VGL

Inspired by Noz Nozawa's stackable rings, Riviere features a classic silhouette accented by striking details and powered by energy-efficient LED. Organic, pod-shaped heads encase ice onyx discs within a bezel setting reminiscent of the way a gemstone is set into a ring. Finished in Vintage Gold Leaf, the distinctive chain suspending the chandelier adds another jewelry-like element to the design. Riviere is available as an 8 or 10-light chandelier and a single-light sconce. Part of our Noz Nozawa collection.

\*Due to the one-of-a-kind nature of the medium, exact colors and patterns may vary slightly from the image shown.

## FINISHES

### VINTAGE GOLD LEAF

## DIMENSIONS

Height: 6"  
Width/Diameter: 51.5"  
Minimum Height: 22"  
Maximum Height: 73.5"  
Canopy/Backplate: 7"  
Hanging Type: 72" Chain  
Product Weight: 26.4lb  
Canopy/Backplate Shape: Round  
Sloped Ceiling Compatible: No  
Living Finish: No  
Uplight Only: No

## Shade

Shade 1: Onyx  
Shade 1 Finish: Ice  
Shade 1 Top Width: 5"  
Shade 1 Height: 1.25"

## ELECTRICAL

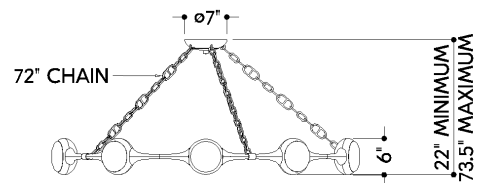
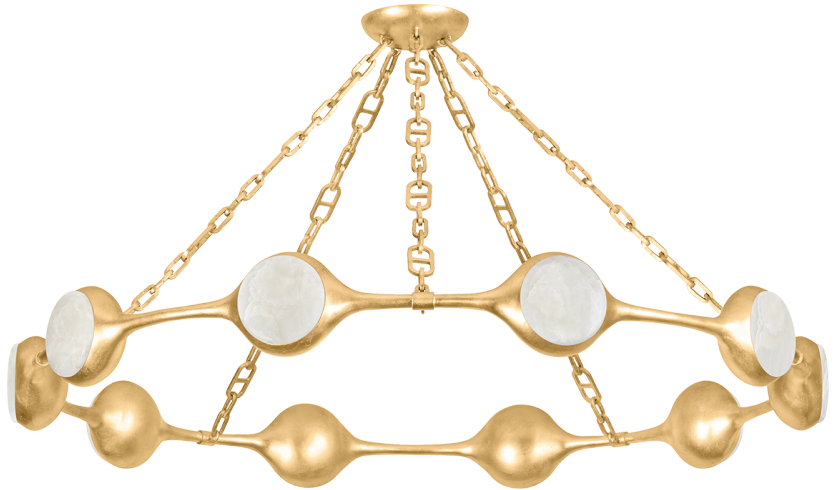


### Bulb 1

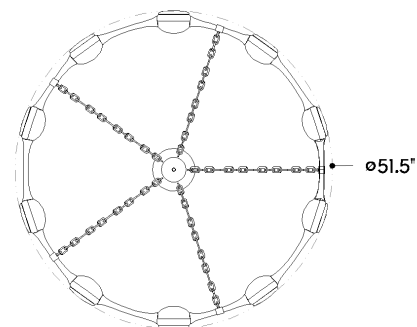
Bulb Included: N/A  
Socket: Integrated LED  
Max Wattage: 103  
Bulb Quantity: 10  
Cord Type: SPT-1 SILVER W/ TINNED GROUND WIRE  
Dimmer Type: ELV, TRIAC  
Gem Box Required (2"x3"): No  
Dark Sky: No  
CRI: 90  
Color Temp.: 2700k  
Lumens: 1650  
Title 24: No  
Field Serviceable: No

## SHIPPING

Carton 1: 56" x 56" x 11"  
Carton 1 Weight: 63lb  
Shipping Method: Truck Only  
Country of Origin: PH



FRONT



BOTTOM