

ALMANDINE

485-61-VGL

Combining organic and modern elements, Almandine is an elevated take on a traditional ring chandelier. The minimalist frame is accented with floral-shaped shades hand-cut from fluted piastre glass. Finished in Vintage Gold Leaf, the restrained metalwork allows the beauty of the blooms to shine. Almandine is available as a single-tier chandelier with 6 or 9 lights, a double-tier chandelier with 15 lights, and a single-light wall sconce.

FINISHES

VINTAGE GOLD LEAF

DIMENSIONS / SPECS

Height: 10"

Width/Diameter: 60.75"

Minimum Height: 38.75"

Maximum Height: 67"

Canopy/Backplate: 7"

Hanging Type: 72" Chain

Product Weight: 51.7lb

Canopy/Backplate Shape: Round

Sloped Ceiling Compatible: No

Living Finish: No

Uplight Only: No

Shade 1: Natural Stone

Shade 1 Finish: Alabaster

Shade 1 Top Width: 5"

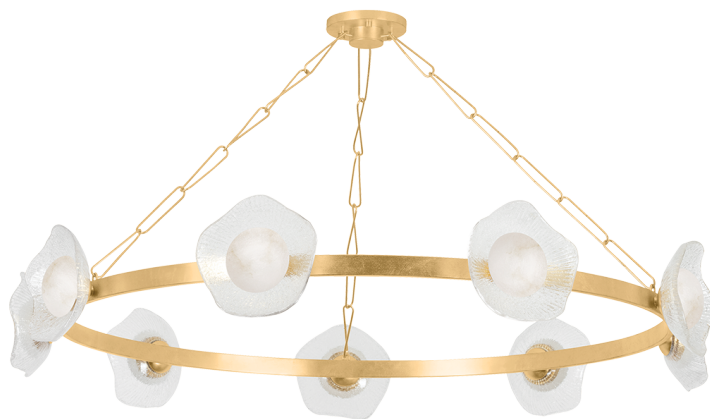
Shade 1 Height: 2.25"

Shade 2: Cast Glass

Shade 2 Finish: Piastra

Shade 2 Top Width: 10"

Shade 2 Height: 3.25"



ELECTRICAL



Bulb 1

Bulb Included: N/A

Socket: Integrated LED

Max Wattage: 90

Bulb Quantity: 9

Cord Type: SPT-1 SILVER W/ TINNED GROUND WIRE

Dimmer Type: ELV, TRIAC

Gem Box Required (2"x3"): No

Dark Sky: No

CRI: 90

Color Temp.: 2700k

Lumens: 3900

Title 24: No

Field Serviceable: No

SHIPPING

Carton 1: 60" x 60" x 15"

Carton 1 Weight: 85lb

Shipping Method: Truck Only

Country of Origin: PH